

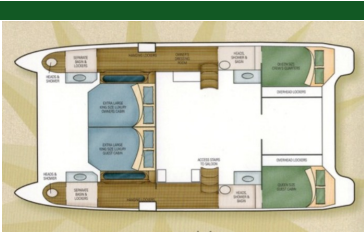


LADY MO
Prowler 48 (2007)

Ref. 1231

Prowler

Located: France



LADY MO
Prowler 48 (2007)
Prowler
Length 14 M (45.9')
Located: France
Ref. 1231

€ 329 000
approx \$ 406 927



Type	Classic
Propulsion	Power
Hull	Catamaran
Length	14m (45.9')
Beam	7m (22.0')
Draft	2m (3.9')
Hull Material	Other
Engine HP	256

PAX	8
Guest Cabin(s)	4

Built/Refit	2007/-
Builder	Jeff Schionning

Comments: Prowler 48 'catamaran from 2007 with Fly bridge

This Power Cat is completely équiped and ready to sail. The owner sells only because of helth problems.

The Prowler Series

The Prowler Series features a range of different vessels, some very different from each other. The main design feature that they share is the registered Vapour Trail hull shape that can achieve great fuel efficiency and speed. These designs will cruise comfortably at 20 knots plus, and will plane easily.

Some key features of this design range are :

- The registered Vapour Trail hull shape used on this design range
- Available kit options, according to specific design...
- Comprehensive and streamlined construction plans
- Fast and fun, from runabouts up to coastal cruisers
- Enough accomodation to fit the whole family and friends!

Constructed in Cape Town South Africa

Materials:

Glass fiber and vinylester resin Quadriaxiale

All in American cherry wood fittings and interiors coussinages buffalo leather